

DEK Snow Blower 24" Skid-Skis (model SK01) - INSTALLATION GUIDE

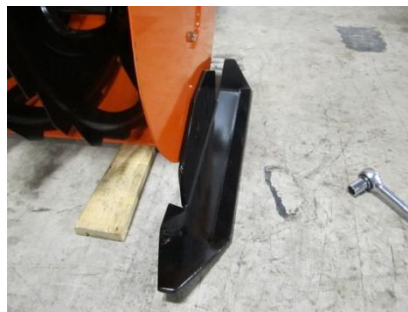
- 1) On a flat surface, use two spacers to raise the Snow Blower collector by approx $\frac{3}{4}$ " from the ground (This will create a small clearance which will allow the front-end of the Snow Blower to ride on the Skid-Skis and avoid most unseen imperfections on the surface to be cleared).



- 2) Remove the original skid shoes and hardware.



- 3) Place the Skid-Skis on the ground beside the Snow Blower collector and align the hardware slots (note that the wider part of the Skid-Ski faces forward and extends in front of the Snow Blower collector).



- 4) Securely fasten the Skid-Skis to the Snow Blower collector housing using the hardware provided. Insert the fasteners such that the flat head of the carriage bolt is inside the collector housing and the washer and nut are on the outside of the collector.



- 5) If you have any questions or need assistance, please contact our customer service team at 919-550-3221.